

0520-020

WYCLIFFE TRACT "C" REPLAT

A PLANNED UNIT DEVELOPMENT
BEING A PART OF WYCLIFFE GOLF AND COUNTRY CLUB (FORMERLY KNOWN AS SUNDIAL COUNTRY CLUB)
AND BEING A REPLAT OF A PORTION OF PARCEL "C" AT WYCLIFFE, AS RECORDED IN
PLAT BOOK 64, PAGES 156 THROUGH 159, AND LYING IN SECTION 25, TOWNSHIP 44 SOUTH, RANGE 41 EAST,
PALM BEACH COUNTY, FLORIDA.

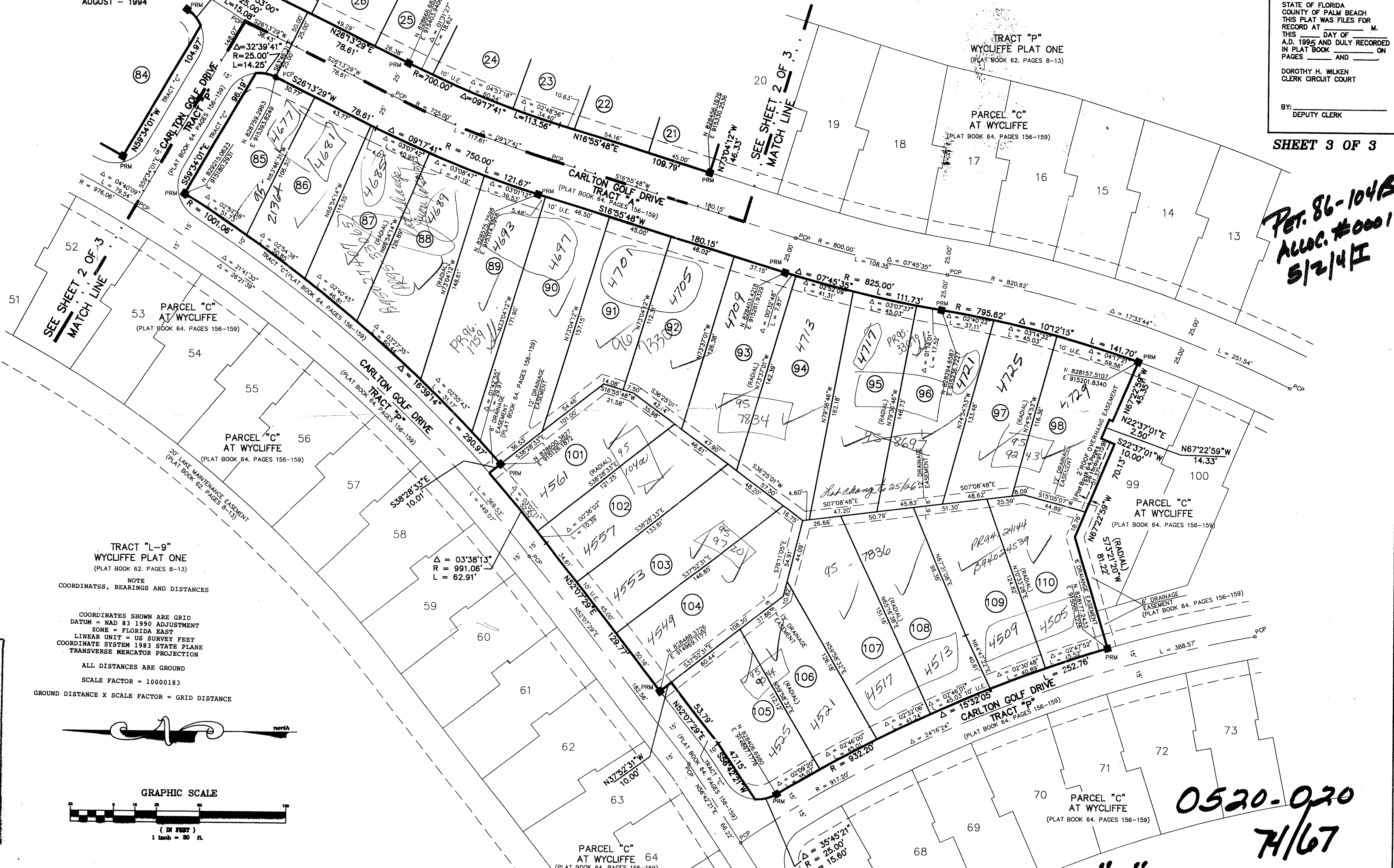
67

STATE OF FLORIDA
COUNTY OF PALM BEACH
THIS PLAT WAS FILED FOR
RECORD AT _____ M.
THIS _____ DAY OF _____
A.D. 1995 AND DULY RECORDED
IN PLAT BOOK _____ ON
PAGES _____ AND _____
DOROTHY H. WILKEN
CLERK CIRCUIT COURT
BY: _____
DEPUTY CLERK

SHEET 3 OF 3

*Pet. 86-104B
Alloc. #0001
5/2/4E*

THIS INSTRUMENT PREPARED BY
DAVID P. LINDLEY
OF
CAULFIELD and WHEELER, INC.
SURVEYORS - ENGINEERS - PLANNERS
7301-A WEST PALMETTO PARK ROAD, SUITE 100A
BOCA RATON, FLORIDA 33433 - (407)392-1999
AUGUST - 1994

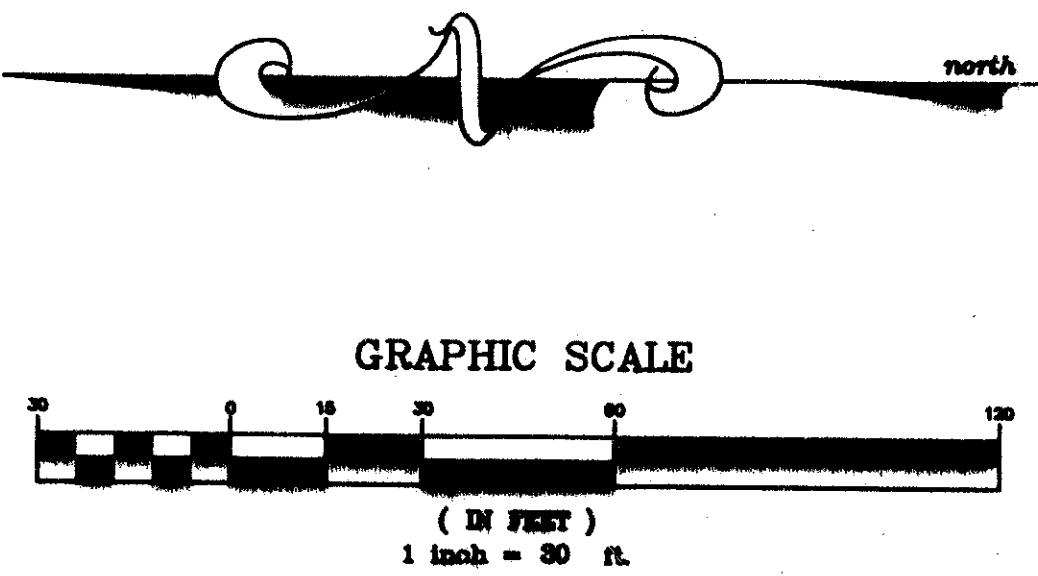


TRACT "L-9"
WYCLIFFE PLAT ONE
(PLAT BOOK 62, PAGES 8-13)

NOTE
COORDINATES, BEARINGS AND DISTANCES

COORDINATES SHOWN ARE GRID
DATUM = NAD 83 1990 ADJUSTMENT
ZONE = FLORIDA EAST
LINEAR UNIT = US SURVEY FEET
COORDINATE SYSTEM 1983 STATE PLANE
TRANSVERSE MERCATOR PROJECTION

ALL DISTANCES ARE GROUND
SCALE FACTOR = 10000183
GROUND DISTANCE X SCALE FACTOR = GRID DISTANCE



BOOK 74
FLOOR ZONE B
QUAD 63
SE 86-104
DUD NAME
TAZ-737

0520-020
7/67

WYCLIFFE TRACT "C" REPLAT